

21-Day Investigation of Ebola Patient's Direct Contacts in Sierra Leone



Call 117

Do not touch sick person or their personal items.

21-Day Investigation of Ebola Patient's Direct Contacts in Sierra Leone

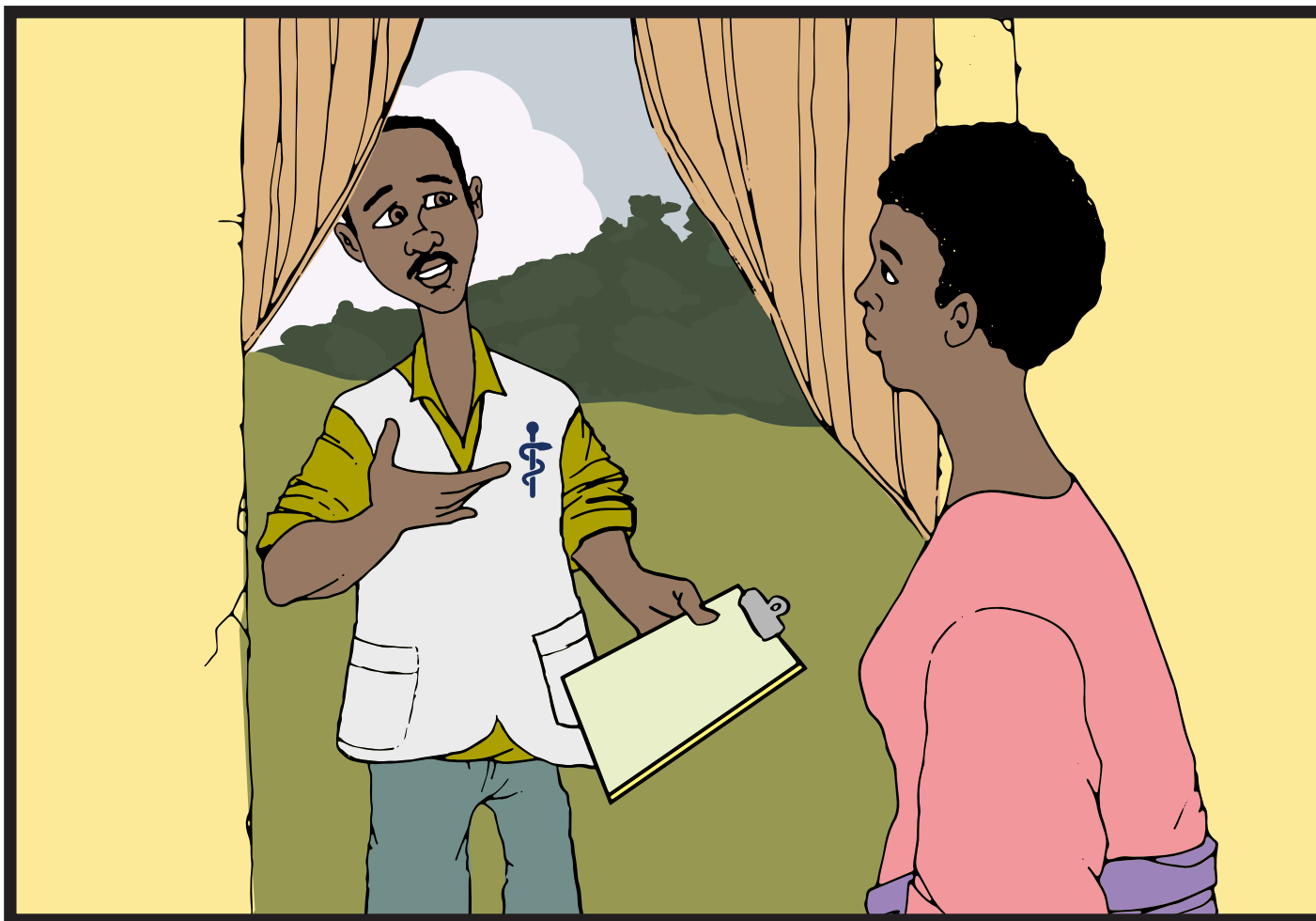


2

Treatment

Quick medical care helps the patient and can stop Ebola from spreading.

21-Day Investigation of Ebola Patient's Direct Contacts in Sierra Leone



3

First Visit

A health worker visits and tells the patient's family how to look for signs of Ebola every day **for 21 days.**

21-Day Investigation of Ebola Patient's Direct Contacts in Sierra Leone



4

Wider Investigation

A health worker talks to others in the community who had direct contact with the patient and tells them how to look for signs of Ebola every day **for 21 days**.

21-Day Investigation of Ebola Patient's Direct Contacts in Sierra Leone



5

Cooperation Saves Lives

Even one missed contact can keep Ebola going.

21-Day Investigation of Ebola Patient's Direct Contacts in Sierra Leone



Follow-up Health Checks

Report any symptoms of Ebola to the health worker every day for 21 days.

21-Day Investigation of Ebola Patient's Direct Contacts in Sierra Leone

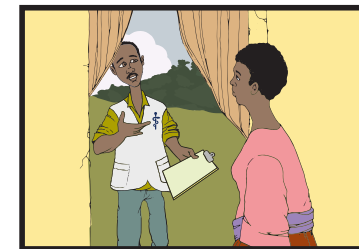
1



2



3



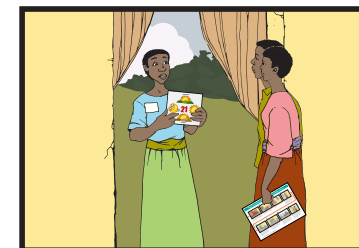
4



5



6



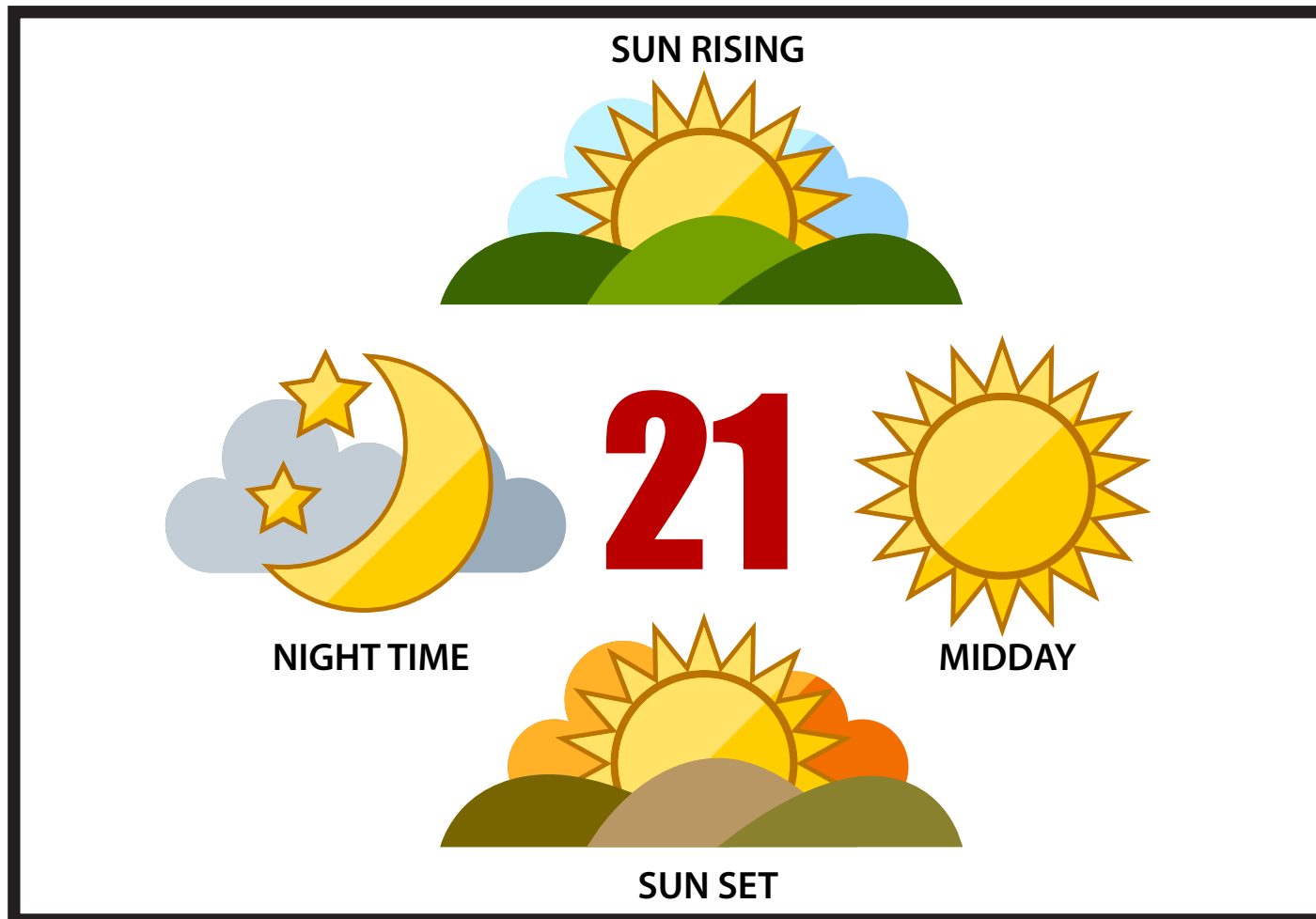
7

If a person develops symptoms, a new 21-day investigation begins.

Repeat steps 1-6

If any contacts develop Ebola symptoms, **new 21-day investigations** of their contacts begin.

21-Day Investigation of Ebola Patient's Direct Contacts in Sierra Leone



Investigation Complete

If no contacts develop symptoms and no new Ebola patients are confirmed, investigation is complete and **Ebola is stopped.**

8