

GO TO THE COMMUNITY CARE CENTRE CLOSEST TO YOU TO RECEIVE CARE

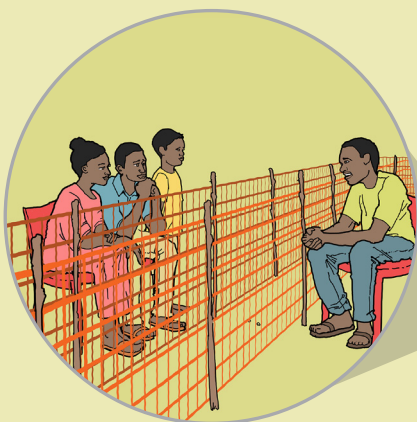
If you are ill, you are welcome at the Community Care Centre.



If you have Ebola, you will go to an Ebola Treatment Centre near your family.



If you do not have Ebola or recover from it, you can go home.



You can see and talk to your family.



Care givers will give you food and drink. They will treat you with kindness and respect.



Your family can call care givers for updates.

PROTECT YOURSELF • PROTECT YOUR FAMILY • PROTECT YOUR COMMUNITY