

Emergency Plan of Action (EPoA) Mali: Preparedness for Ebola

DREF operation	Operation n° MDRML010; Glide n° EP-2014-000039-MLI
Date of issue: 18.04.2014	Date of disaster: N/A
Operation manager (responsible for this EPoA): Aissa Fall	Point of contact: Aissa Fall, Health Manager
Operation start date: 19.04.2014	Expected timeframe: Three months
Overall operation budget: CHF 57,715	
Number of people affected: At-risk communities of Bamako, Kayes, Koulikoro and Sikasso; up to 8 million people	Number of people to be assisted: Up to 50% of at-risk communities of Bamako, Kayes, Koulikoro and Sikasso
Host National Society(ies) presence (n° of volunteers, staff, branches): 200 volunteers from branches of Kayes, Koulikoro, Sikasso and Bamako	
Red Cross Red Crescent Movement partners actively involved in the operation: IFRC and Mali Red Cross	
Other partner organizations actively involved in the operation: Ministry of Health	

A. Situation analysis

Description of the disaster

A fast-spreading outbreak of Ebola virus disease is affecting several countries in West Africa. With cases registered since February and March, Guinea and Liberia have registered up to 150 and 20 cases respectively with more than 100 deaths in Guinea and ten in Liberia. With affected regions of Macenta, Gueckedou, N'Zerekore and Kissidougou in Guinea and Lofa, Nimba, Margibi and Montserrado regions in Liberia, additional suspected cases have been reported in Sierra Leone and Mali and laboratory identification is ongoing to determine its nature.

To date, no treatment or vaccine is available for Ebola virus disease, which kills between 25% and 90% of victims, depending on the strain of the virus. The disease is transmitted by direct contact with blood, faeces or sweat, or by sexual contact or unprotected handling of contaminated corpses.

This is the first time an outbreak of this size is being experienced in West Africa.

Since the confirmation of the Ebola virus disease in Guinea, the IFRC with the National Societies have developed response strategy. The strategy includes supporting the National Societies of the affected countries and countries with a physical border to the affected countries.

The main activities the IFRC is supporting the affected National Societies include:

- Strengthening National Society volunteer and coordination networks through logistics and training support
- Clinical case management, support with isolation and life-support
- Contribution to epidemiological investigation and epidemic control measures
- Case finding, contact tracing, disinfection and dead body management
- Information, education and communication to the population and reduction of stigma
- Psychosocial support; coping with crisis, grief and loss

The main activities the IFRC is supporting the National Societies with a physical border to the affected countries include:

- Preparedness for response through volunteer training in communication around epidemics and behavioural change
- Supporting Ministries of Health in prevention activities and social mobilisation

- Pre-positioning personal protective equipment and related training
- Adaption and dissemination of information, education and communication material linked with community social mobilisation activities

The proposed activities in Mali follow the regional response framework's support to neighbouring National Societies.

Summary of the current response

Overview of Host National Society

Mali is vulnerable to disasters including epidemics. Regular epidemics include Cholera, Yellow Fever and Measles and the Mali Red Cross has experience preparing for and responding to these epidemics.

The high risk of Ebola virus disease in the neighbouring regions to Guinea has promoted the National Society to conduct preparedness activities alongside the Ministry of Health. Mali Red Cross has expertise in preparedness and response related to epidemics over the past years and is in the midst of reinforcing the branches along the border with Guinea.

Movement Coordination

Mali Red Cross is supported by the IFRC through its Sahel Regional Office, located in Dakar, Senegal. Other support is provided by the ICRC, Danish, Swiss, Spanish, Belgium, French and Canadian Red Cross Societies. Regular Movement Coordination meetings and joint-activities occur. At the onset of the alert for Ebola virus disease, the Mali Red Cross has been keeping all Movement actors informed of activities of the Ministry of Health and Social Action and themselves. IFRC regional office is supporting in information gathering and dissemination.

Overview of non-RCRC actors in country

The authorities in Mali have set up a platform for a possible outbreak of Ebola virus disease as well as an isolation centre. The regular surveillance system has been strengthened with a screening system set up in Kourémalé and at the Bamako Sénou airport. Suspected cases are under investigation for laboratory confirmation. World Health Organisation has provided the authorities with personal protective equipment and is providing additional technical assistance.

Needs analysis, beneficiary selection, risk assessment and scenario planning

Needs Assessment

As Mali has not experienced the Ebola virus disease previously, the population has limited knowledge, including mode of transmission and proper behaviour to avoid risks. Due to the highly-infectious nature of the disease many people are fearful and it is important to reduce rumours and misconceptions related to risks.

Risk Assessment

The Mali Red Cross is committed to do its utmost to support the Ministry of Health around social mobilisation to prepare the population and prevent any outbreaks in Mali. On reducing risks for staff and volunteers, the Mali Red Cross will ensure that personal protective equipment is properly used

B. Operational strategy and plan

Overall objective

The overall objective is to prepare the Mali Red Cross through reinforcement of volunteers and material for a possible outbreak and also to undertake social mobilisation in order to reduce risk and improve preparedness / prevention activities alongside the Ministry of Health. The volunteer reinforcement and social mobilisation activities will occur in the regions that border Guinea: Bamako, Kayes, Sikasso and Koulikoro.

Proposed strategy

The proposed strategy is in line with the IFRCs response strategy for neighbouring countries of Guinea. The activities will focus on:

- Preparedness for response through volunteer training in communication around epidemics and behavioural change
- Supporting Ministries of Health in prevention activities and social mobilisation
- Pre-positioning personal protective equipment and related training
- Adaption and dissemination of information, education and communication material linked with community social mobilisation activities

Operational support services

Human resources

The Mali Red Cross is planning to deploy 200 volunteers and National Society's staff in the field. These mobilized volunteers and staff will carry out the activities outlined in this operation. IFRC will be supporting the Mali Red Cross with a deployment of a Regional Disaster Response Team member to facilitate the trainings and support with the social mobilisation activities.

Logistics and supply chain

The specialized personal protective equipment kits will be procured by IFRC to ensure they meet the necessary standards. All other necessary items will be procured locally.

Communications

Visibility of the work of Red Cross volunteers will be ensured during the operation through local media and visibility material. A proper documentation and reporting to allow for lessons learnt will be ensured as well. Malian Red Cross Society will provide regular updates on the operation.

Security

Security risks will be reviewed and responded to accordingly. IFRC has prepared a security brief for its staff deployed to the country, and close consultation will be carried out with the Mali Red Cross and ICRC who have permanent presence in the country.

Planning, monitoring, evaluation, & reporting (PMER)

The Mali Red Cross Society, in close cooperation with the Sahel Regional Office will monitor the progress of the operation and provide necessary technical expertise. The monitoring and reporting of the operation will be undertaken by the National Society. Brief weekly updates will be provided to the IFRC on general progress of the operation, and regular monitoring reports will provide detailed indicator tracking.

Administration and Finance

The Mali Red Cross has a permanent administration and finance department which ensures the proper use of financial resources in accordance with conditions to be clarified in the Memorandum of Understanding between the Mali Red Cross Society and the IFRC Sahel Regional Representation. Financial resource management will be done according to the National Society's regulations and DREF guidelines. Additionally, the Mali Red Cross's own procedures will be applied to the justification of expenses process and will be done on IFRC formats.

[illegible]

Contact information

For further information specifically related to this operation, please contact:

- **Mali Red Cross Society:** Mamadou Moussa Traoré, Secretary General, Tel : +223 764 657 48 sec.exec@croixrouge-mali.org
- **IFRC Regional Representation:** Momodou Lamin Fye, Regional Representative for Sahel; Dakar; phone: +221.33.869.36.41 or +221.77.332.56.72; email: momodoulamin.fye@ifrc.org;
- **IFRC Africa Zone:** Daniel Bolaños, Disaster Management Coordinator for Africa; Nairobi; phone: +254 (0)731 067 489; email: daniel.bolanos@ifrc.org
- **IFRC Geneva:** Christine South, Operations Quality Assurance Senior Officer; phone: +41.22.730.45 29; email: christine.south@ifrc.org
- **IFRC Zonal Logistics Unit (ZLU):** Rishi Ramrakha, Nairobi; phone +254 20 283 5142, Fax +254 20 271 2777, email: rishi.ramrakkha@ifrc.org

For Resource Mobilization and Pledges:

- **In IFRC Zone:** Martine Zoethouthmaar, Resource Mobilization Coordinator; Addis Ababa; phone: + 251 93-003 6073; email: martine.zoethoutmaar@ifrc.org

For Performance and Accountability (planning, monitoring, evaluation and reporting):

- **IFRC Africa Zone:** Robert Ondrusek, PMER Coordinator; Nairobi; phone: +254 731 067277; email: robert.ondrusek@ifrc.org

How we work

All IFRC assistance seeks to adhere to the [Code of Conduct for the International Red Cross and Red Crescent Movement and Non-Governmental Organizations \(NGOs\) in Disaster Relief](#) and the [Humanitarian Charter and Minimum Standards in Disaster Response \(Sphere\)](#) in delivering assistance to the most vulnerable.

The IFRC's vision is to inspire, encourage, facilitate and promote at all times all forms of humanitarian activities by National Societies, with a view to preventing and alleviating human suffering, and thereby contributing to the maintenance and promotion of human dignity and peace in the world.

www.ifrc.org

Saving lives, changing minds.



The IFRC's work is guided by [Strategy 2020](#) which puts forward three strategic aims:

1. Save lives, protect livelihoods, and strengthen recovery from disaster and crises.
2. Enable healthy and safe living.
3. Promote social inclusion and a culture of non-violence and peace.

DREF BUDGET

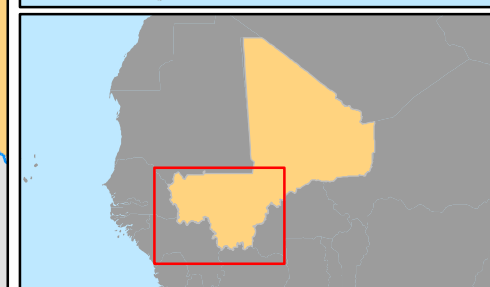
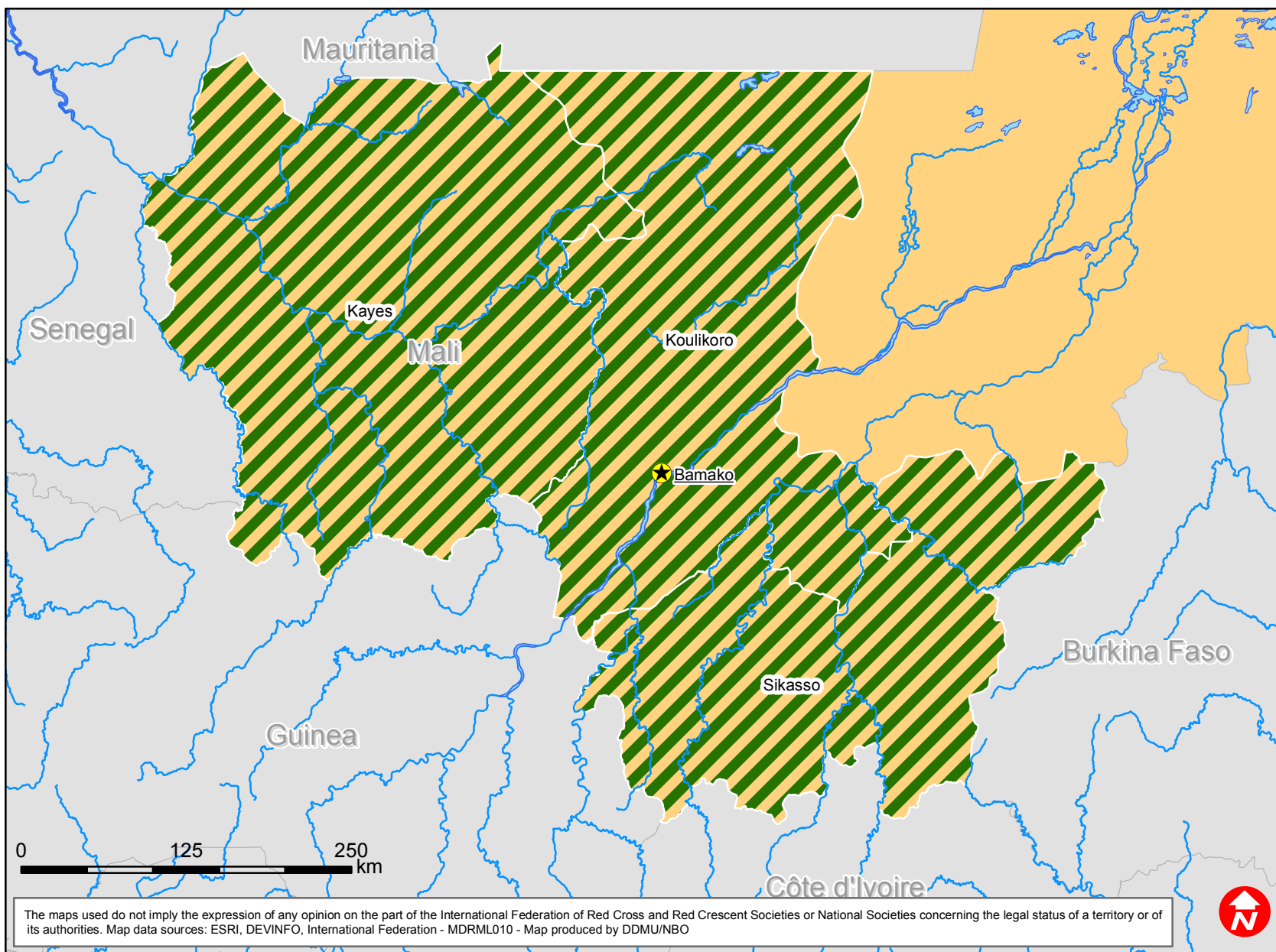
18/04/2014

Mali: Preparedness for Ebola (MDRML010)

Budget Group	Budget CHF
Shelter - Relief	0
Shelter - Transitional	0
Construction - Housing	0
Construction - Facilities	0
Construction - Materials	0
Clothing & Textiles	0
Food	0
Seeds & Plants	0
Water, Sanitation & Hygiene	1,700
Medical & First Aid	6,000
Teaching Materials	400
Utensils & Tools	0
Other Supplies & Services	0
Emergency Response Units	0
Cash Disbursements	0
Total RELIEF ITEMS, CONSTRUCTION AND SUPPLIES	8,100
Land & Buildings	0
Vehicles Purchase	0
Computer & Telecom Equipment	0
Office/Household Furniture & Equipment	0
Medical Equipment	0
Other Machinery & Equipment	0
Total LAND, VEHICLES AND EQUIPMENT	0
Storage, Warehousing	0
Distribution & Monitoring	3,200
Transport & Vehicle Costs	8,400
Logistics Services	0
Total LOGISTICS, TRANSPORT AND STORAGE	11,600
International Staff	6,000
National Staff	0
National Society Staff	1,849
Volunteers	15,300
Total PERSONNEL	23,149
Consultants	0
Professional Fees	0
Total CONSULTANTS & PROFESSIONAL FEES	0
Workshops & Training	4,000
Total WORKSHOP & TRAINING	4,000
Travel	2,000
Information & Public Relations	2,443
Office Costs	0
Communications	1,900
Financial Charges	1,000
Other General Expenses	0
Shared Support Services	0
Total GENERAL EXPENDITURES	7,343
Programme and Supplementary Services Recovery	3,523
Total INDIRECT COSTS	3,523
TOTAL BUDGET	57,715
NET DREF NEEDS	57,715



Mali: Ebola virus disease (EVD) preparedness



 Targeted regions

